



## **Miami, My Garden – Greetings from a Greener Miami**

### **YOUR CHALLENGE:**

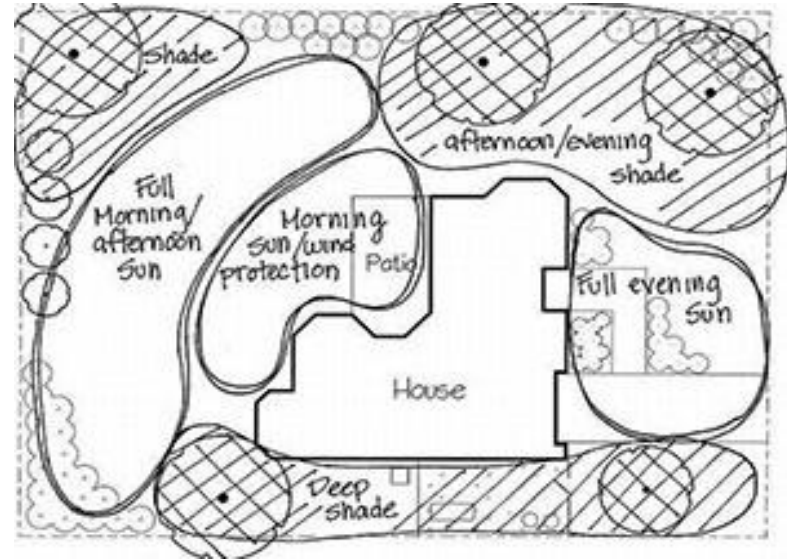
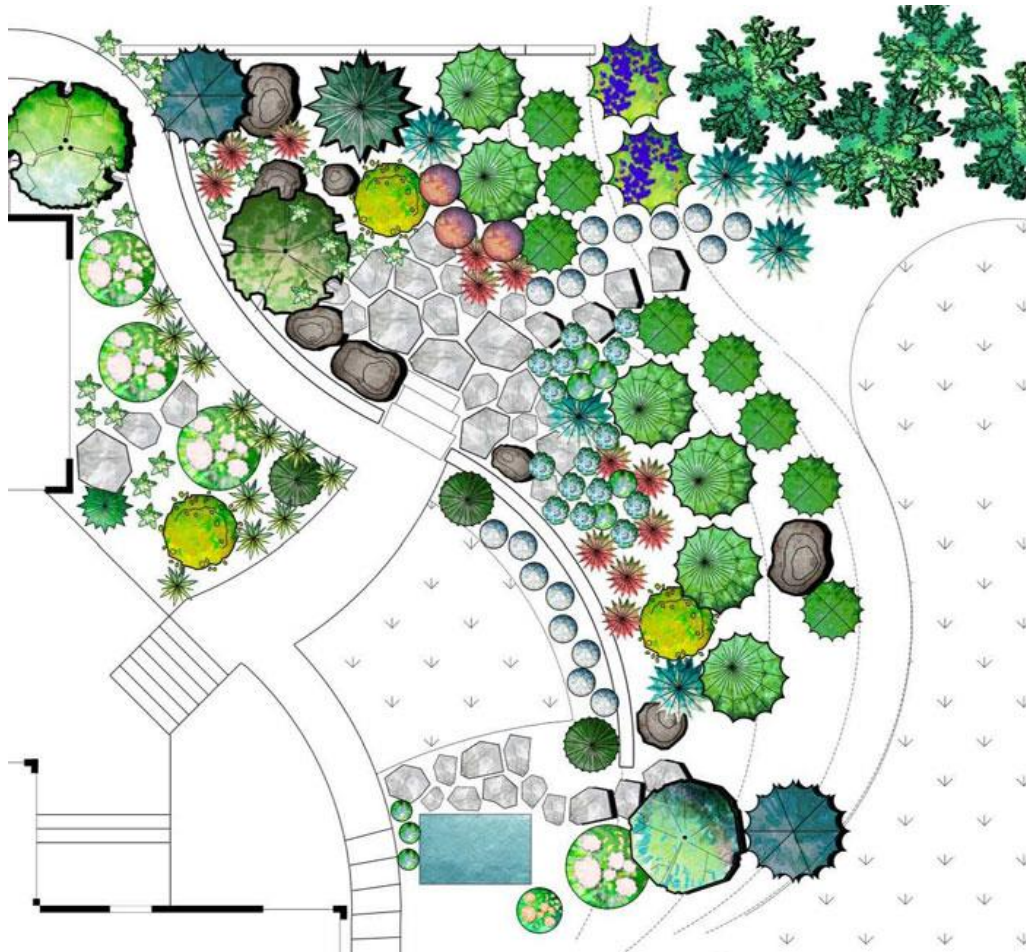
When you think of South Florida, you probably think of our warm weather and beautiful beaches. But did you know that plants also play an important role in making our cities a better and more beautiful place to live? Take a moment to think of any part of our city that does not have many plants or trees. Now, think of what this place would look like if it were a garden that everyone in the whole world would want to visit. Would there be lots of trees and flowers everywhere? Would there be plants growing in places you don't expect, like up the sides of buildings or on the roof?

Using paper, colored pencils, markers and your imagination, draw your Iconic Garden on a poster. Your poster should be creative, colorful, and make everyone want to visit South Florida! Poster must be no larger than 11" x 17".

**Entry must include student first name, last initial, grade and school name on bottom right corner. Full name and teacher should be on the back.** Submissions should include a 2 - 3 sentence description of what is depicted in the Iconic Garden.

**Bring your finished poster to Art class. Absolutely no work accepted after Monday, November 27, 2023,** This counts for two grades.

Landscape architecture Landscape architecture is the study and practice of designing environments of varying scale. It encompasses elements of art, environment, architecture, engineering, and gardening.



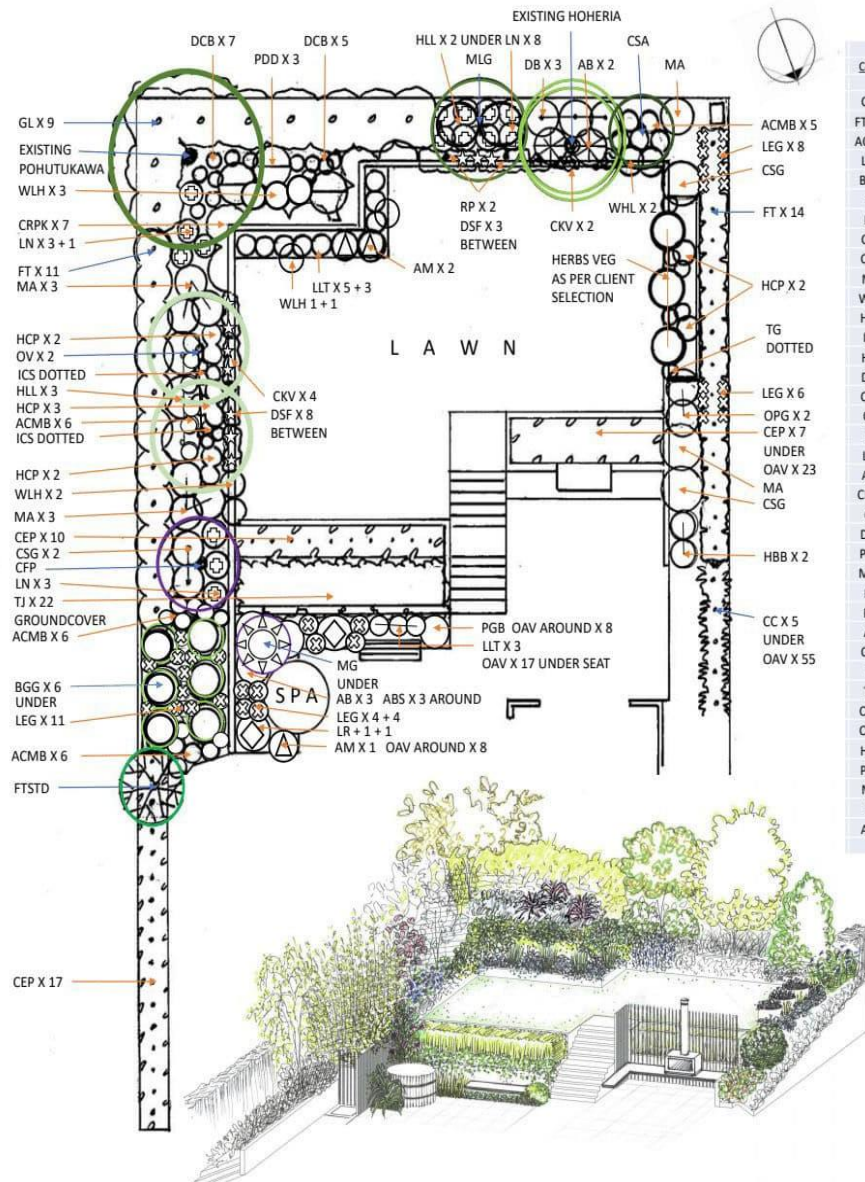




These photos are good examples of how flowers, plants and trees can transform house to a home!







Code	Plant	Common Name	Numbers	Pot Size	Centres
CEP	Camellia early pearly	Camellia	34	8L	600
FTSTD	Ficus tuffi Standard	Tuffly fig	1	35L	1000
ACMB	Athrodipom c matapouri bay	Renga renga lilly	23	2L	600
LEG	Liriope evergreen giant	lilly turf	33	10cm	600
BGG	Bambusa golden goddess	Slender bamboo	6	12L	850
TJ	Trachyloperum jasminoides	Star jasmine groundcover	22	2.5L	450
LN	Lomandra nyalla	Matt rush	15	2L	750
CFP	Cercis forest pansy	Redbud	1	45L	2500
CSG	Corokia silver ghost	Corokia	4	5L	1000
MA	Muehlenbeckia astonii	Tororaro	8	1.5L	1000
WLH	Westringea low horizon	Coastal rosemary	9	2L	700
HCP	Heliotrope cherry pie	Cherry pie	9	pb5	500
ICS	Iris como surprise	Iris bearded	6	bare	400
HLL	Hydrangea limelight	Hydrangea	5	3.5L	1200
DSF	Dichondra silver falls	Silver falls	11	1.5L	500
CKV	Coprosma kirkii variegata	Mirrorplant	6	1.5L	1200
OV	Olive verdale	Olive	2	80L	3000
FT	Ficus tuffi bushy	Tuffly fig	11	35L	1000
LLT	Lomandra lime tuff	Lime tuff	11	2L	600
AM	Asparagus myrsii	Fox tail	3	8L	800
CRPK	Coprosma repens poor knights	Mirrorplant	7	2.5L	900
GL	Griselinia lucida	Akapuka	9	35L	1200
DCB	Dianella clarity blue	Clarity blue lilly	12	1.5L	500
PDD	Phormium dark delight	Purple flax	3	2.5L	1000
MLG	Magnolia little gem	Little gem	1	45L	2500
RP	Rosemary prostrata	Creeping rosemary	2	2L	1200
DB	Dietles bicolor	Fortnight lilly	3	1.5L	1000
AB	Astelia banksii	Silver spear	3	2L	1000
CSA	Camellia silver anniversary	Camellia	1	25L	2000
FT	Ficus tuffi	Tuffly fig	10	8L	850
TG	Thymus golden	Thyme	6	pb5	500
OPG	Osmanthus pearly gates	Pearly gates	2	2.5L	1000
OAV	Ophiopogon alba variegata	Variegated mondo	111	9cm	200
HBB	Hydrangea bridal bouquet	Hydrangea	2	2.5L	1000
PGB	Podocarpus gracilior ball	Fern pine ball	1	6L	800
MG	Magnolia genie	Genie	1	35L	1500
LR	Ligularia renuformis	Tractor seat	2	2.5L	1000
ABS	Ajuga black scallop	Bugle	3	.5L	400

**PLANTING NOTES:**  
 Blue arrow indicates feature or canopy planting. Orange = shrubs underplanting groundcover  
 Please note: Pb (Pint bag) or L (litre) sizes are suggestions only.  
 Plant sizes are determined by the clients budget and availability at the time of ordering.  
 The planting plan is indicative of potential growth not actual plant size at time of planting.  
 All garden beds are to be enriched with a 150-200mm layer of Living Earth Ultra soil pit mix or NZLS Super soil screened Waikato loam  
 Install drainage as required  
 Stake and tie all specimen trees and plants  
 Add Yates Dynamic Lifter to all holes at planting time at rate specified on packaging.  
 Plant so that the top of the root ball is visible, mound slightly to avoid collar rot.  
 Mulch with a 100mm depth of black vegetable dyed fine bark/compost mulch.  
 Water daily and deeply for at least two weeks until established  
 Irrigation is optional and recommended. Required in areas where planting is under eaves.  
 Within the first 4 to 5 months of a tree being newly planted it is critical that they have sufficient water to ensure new root growth and establishment of a good firm root structure.  
 Staking is critical initially, allowing new root growth to penetrate the surrounding soil.



This example shows how the designer will draw a map of the building, make a list of the plants they are going to use, show photos of the plants, and draw a picture of what it will look like when it is done. This is a challenging artistic job.



This design is for a patio outside of a building. What colors of plants did the artist use? Does the color of the design feel warm or cool? What kind of textures did they use?





Think about the last photo. How is this picture different? Does it feel the same? Explain why.













